

Prevent Costly Repairs


Reduce downtime while preventing costly repairs to sensitive production equipment used in web manufacturing processes with our state of the art; center mount splice detection technology. This Splice Detector reveals abrupt changes in web material thickness due to splices, missing plies and web breaks in paper, coating and conversion processes.

Ensure Product Quality

Our technology has been successfully applied to ensure delivered product quality in many different grades of material on equipment such as:

- Sheeters
- Coaters
- Supercalenders
- Extrusion/Laminators
- Roto Presses
- Slitters
- Winders/Rewinders

Choose the Model 1032B Classic® Splice Detector™ Technology to ensure the delivered quality of your products.

	1032B™
TECHNICAL SPECIFICATIONS	
Defects Types Detected:	Splices Web Breaks
Material Compatibility:	Papers Plastics Films Other Non-metallic Materials
Web Thickness:	0.20" Max. (5.08mm Max.)
Gap Width:	0.25" (6.35 mm)
Maximum Web Speed:	No Limit
Relay Alarm Outputs:	
Dry Output Contacts:	2 (Non-inductive)
Current at 110 VAC:	0.1 Amp
Current at 220 VAC:	0.05 Amp
Alarm On Period:	1 Second
Electronic Alarm Output:	1
Pulse Outputs:	15 V (± 3 V)
Voltage:	Positive Going
Direction:	10 ms
Duration:	
Ambient Temperature:	40 to 160° F (4 to 70° C)
Dimensions:	6.0" X 9.5" X 4.5" (15.24 cm X 24.13 cm x 11.43 cm)
Power:	110/220/240 VAC 50/60 Hz Single Phase
Weight:	11.5 lbs 5.22 kilogram
<p style="text-align: center;">Specifications are subject to change without notice.</p> <p>Note: If you web speed is less than 100 fpm, specialized circuitry may have to be applied. If you purchase this unit and it is found that specialized circuitry is required due to misinformation, all monies applicable will be charged, then applied as a credit for replacement of this standard unit with a specialized unit. Additional fees may be applied.</p>	



R.K.B. OPTO-ELECTRONICS, INC.

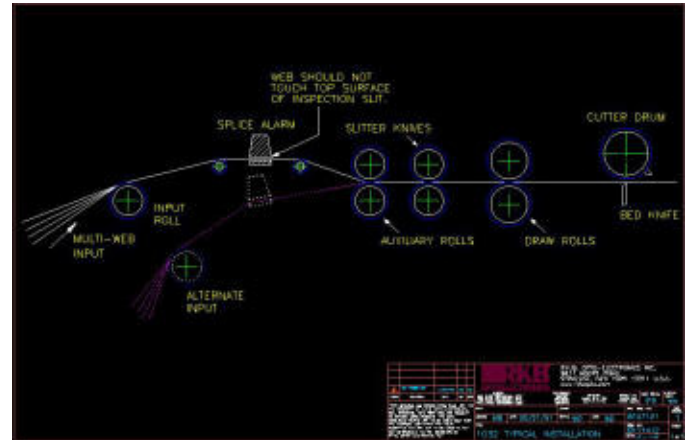
6677 Moore Road • Syracuse, New York • 13211 • United States of America
 Tel: +001-315-455-6636 • Fax: +001-315-455-8216 • Email: sales@splicedetector.com
 Internet: www.rkbopto.com / www.splicedetector.com / www.splicedetector.net

Monitor Multiple Webs

A single unit will monitor up to 16+ webs of material simultaneously for on-line detection of splices. It automatically adjusts to changes in the # of webs, type and caliper of materials. Special splice markings of any kind are not required.

Achieve Unattended Operation

Both a signal contact closure and a signal digital pulse output are included with each unit to facilitate interfacing to control production equipment such as sheeter gates, coating head applicators, presses, laminators, treaters, audio/visual alarms as well as automatic marking systems. Our technology can also be combined with our Model 1122 Abolisher® Reject Gate Control™ Technology or Model 1280 Guardian® Multicolor Edge Marking™ Technology for completely unattended operation of your production equipment.



Benefits Gained

- Eliminates damage to sensitive process components like soft rolls, embossing rolls and print heads
- Detect every splice, every time without fail
- Monitors all webs being processed at the same time at one convenient point where they come together.
- Audio/visual alarms as well as automatically controlling machine stop, nip point release, reject gate and shearing.
- No need for complicated sensor arrangements, installations and integration.

Call SDT

With over 5000 installations in 130 countries, our Splice Detection Technology is the leader worldwide. Call us to discuss your splice detection applications and to learn more about the industries most diverse line of machine vision web inspection related products.



Reduce Setup Time

Designed for center of web mounting, the Model 1032B Classic® Splice Detector™ eliminates the need for repositioning to accommodate changes in web width. It can be installed at any convenient position in the web's path to provide defect detection at the earliest possible stage of the process.



R.K.B. OPTO-ELECTRONICS, INC.

6677 Moore Road • Syracuse, New York • 13211 • United States of America
 Tel: +001-315-455-6636 • Fax: +001-315-455-8216 • Email: sales@splicedetector.com
 Internet: www.rkbopto.com / www.splicedetector.com / www.splicedetector.net