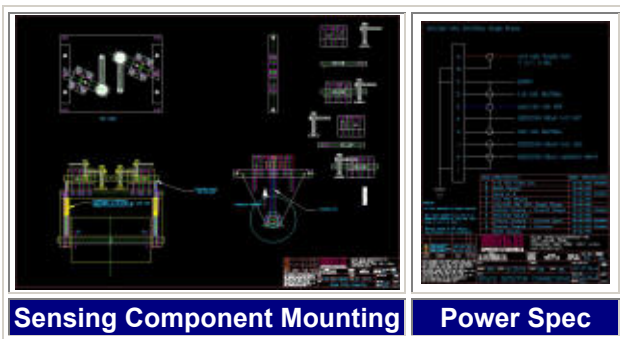


Prevent Costly Repairs

Reduce downtime while preventing costly repairs to rolls, dies, and sensitive production equipment used in web manufacturing processes with our state of the art resistive based Splice Detector. It will reveal abrupt changes in web material thickness due to splices in standards and metallized conversion processes.



Reduce Setup Time

Designed for center of web mounting, the 1032C Enforcer® eliminates the need for repositioning to accommodate changes in web width. It can be installed at any convenient position in the web's path to provide defect detection at the earliest possible stage of the process.

MODEL 1032C™

TECHNICAL SPECIFICATIONS

Defects Types Detected:	Splices Large Hard Wrinkles
Material Compatibility:	Papers Plastics Films Metallic Materials
Web Thickness:	500 micron thick maximum
Maximum Web Speed:	1,500 fpm (457 m/min)
Relay Alarm Outputs:	
Dry Output Contact	2 (Non-inductive)
Closures:	0.1 Amp
Current Capacity at 110 VAC:	0.05 Amp
Current Capacity at 220 VAC:	1 Second
Alarm On Period:	
Electronic Alarm Output:	
Pulse Outputs:	1
Voltage:	15 V (± 3 V)
Direction:	Positive Going
Duration:	10 ms
Ambient Temperature:	40 to 160° F (4 to 70° C)
Dimensions:	6.0" X 11.63" X 4.5" (15.24 cm X 29.53 cm x 15.24 cm)
Power:	110/220/240 VAC 50/60 Hz Single Phase
Weight:	11.5 lbs/ 5.22 kilogram

Specifications are subject to change without notice.
 Note: If you web speed is less than 100 fpm, specialized circuitry may have to be applied. If you purchase this unit and it is found that specialized circuitry is required due to misinformation, all monies applicable will be charged, then applied as a credit for replacement of this standard unit with a specialized unit. Additional fees may be applied.



R.K.B. OPTO-ELECTRONICS, INC.

6677 Moore Road • Syracuse, New York • 13211 • United States of America
 Tel: +001-315-455-6636 • Fax: +001-315-455-8216 • Email: sales@splicedetector.com
 Internet: www.rkbopto.com / www.splicedetector.com / www.splicedetector.net

Ensure Product Quality

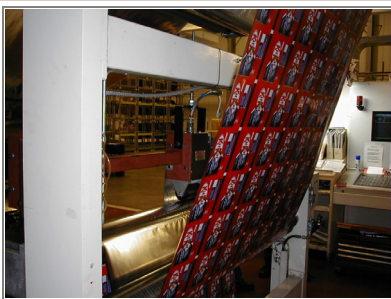
Our Splice Detection technology has been successfully applied to ensure delivered product quality on many different grades of material such as papers, films, foils, and plastics. Our Splice Detectors are implemented on many types of equipment such as:

- Sheeters
- Coaters
- Extrusion
- Laminators
- Roto Presses
- Slitters
- Winders/Rewinders

Achieve Unattended Operation

Both a signal contact closure and a signal digital pulse output are included with each unit to facilitate interfacing to control production equipment such as sheeter gates, coating head applicators, presses, laminators, treaters, audio/visual alarms as well as automatic marking systems. Our technology can also be combined with our Model 1122 Abolisher® Reject Gate Control™ Technology or Model 1280 Guardian® Multicolor Edge Marking™ Technology for completely unattended operation of your production equipment.

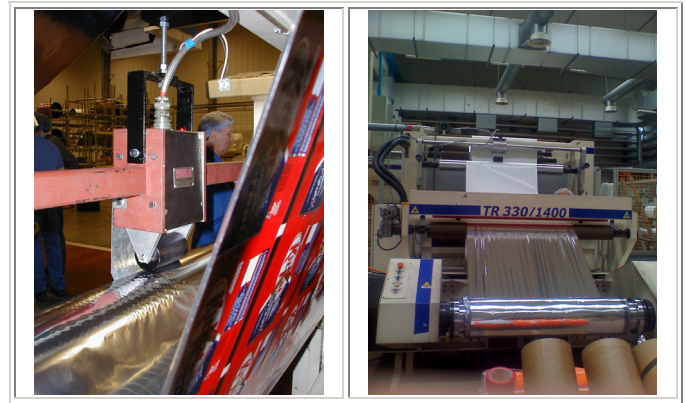
Web Monitoring



Typical Installation

Our Model 1032C Enforcer® Metalized Splice Detector™ Technology is self-calibrating and monitors the web material continuously with no adjustments or re-calibration requirements. The 1032C Enforcer® is

unaffected by material basis weight changes and color and will automatically adjust itself to new conditions. Special splice tapes or color marking are not required and the operation is unaffected by printed material.



Expect Reliability

RKB Splice Detectors have been designed for stable and reliable operation under real world conditions found in various low, high and ultra high-speed papermaking, printing, and converting processes. Their performance has been proven over time in over 5000 installations in over 130 countries worldwide.

Call SDT

Call us to discuss your splice detection applications and to learn more about the industries most diverse line of machine vision web inspection related products.

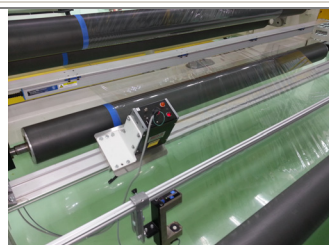


Food Packaging Install

Film Install



USA Install



Europe Install

R.K.B. OPTO-ELECTRONICS, INC.

6677 Moore Road • Syracuse, New York • 13211 • United States of America
Tel: +001-315-455-6636 • Fax: +001-315-455-8216 • Email: sales@splicedetector.com
Internet: www.rkbopto.com / www.splicedetector.com / www.splicedetector.net